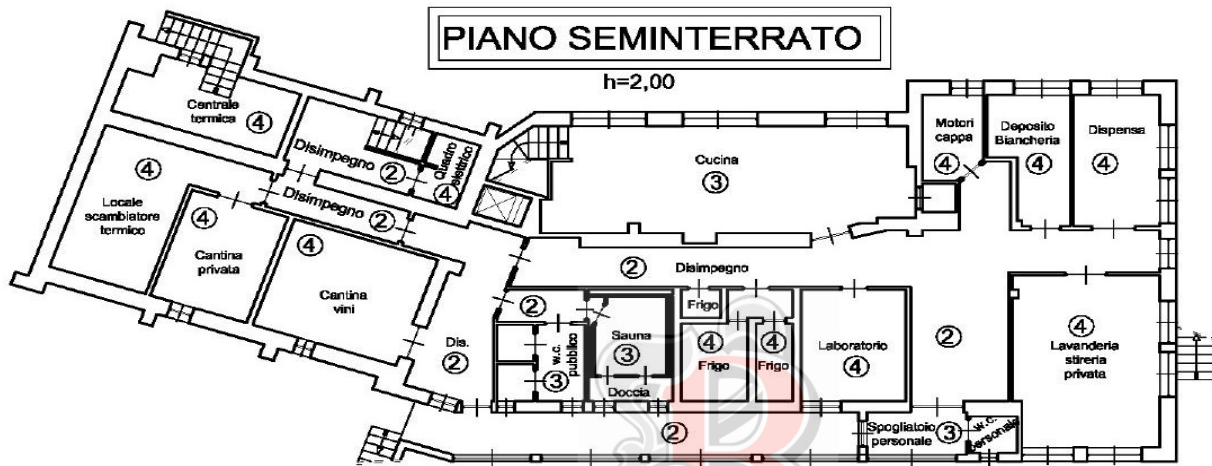


PIANO SEMINTERRATO

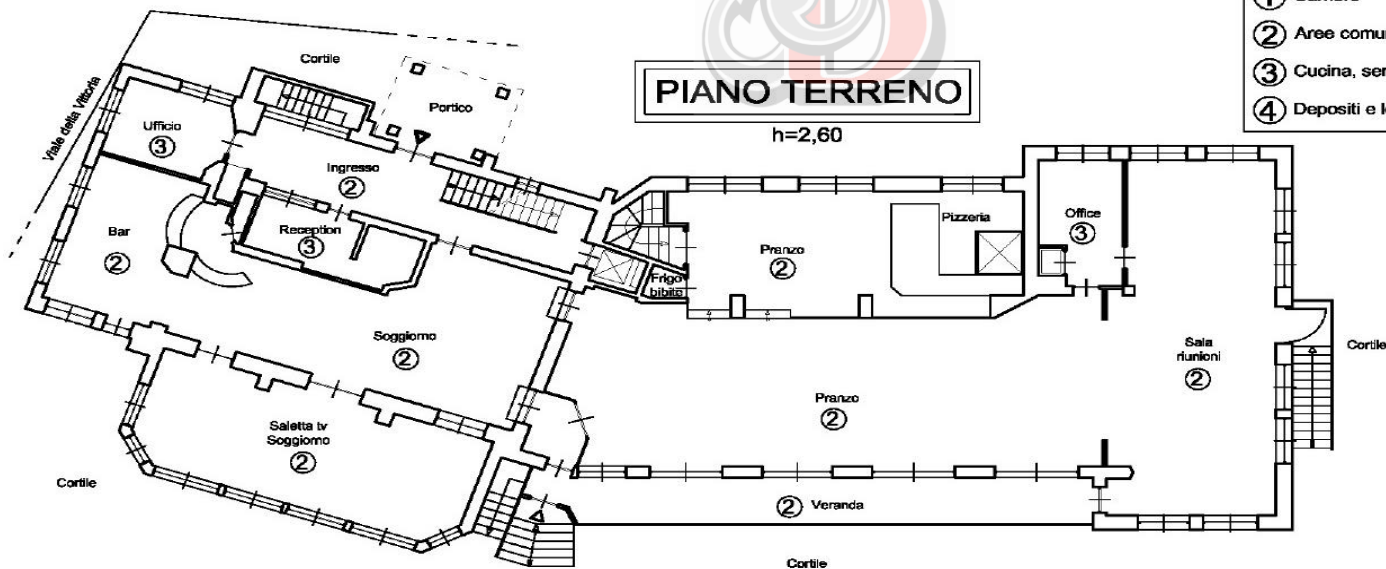
h=2,00



- ① Camere
- ② Aree comuni
- ③ Cucina, servizi, reception ecc
- ④ Depositi e locali tecnici

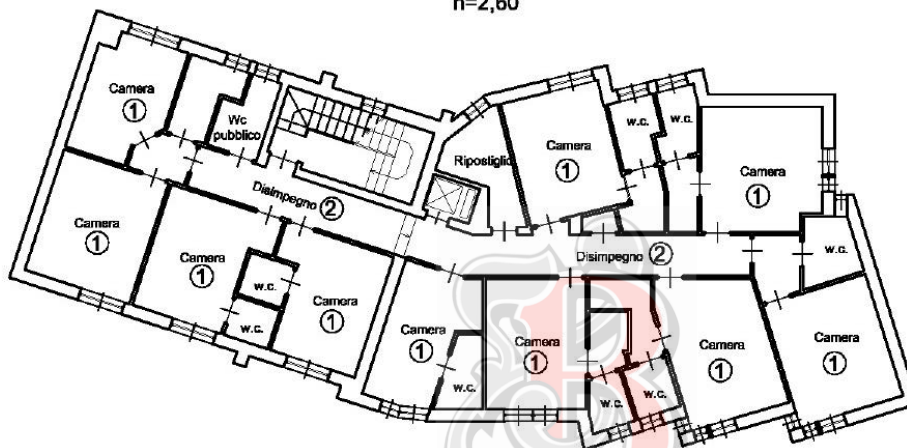
PIANO TERRENO

h=2,60



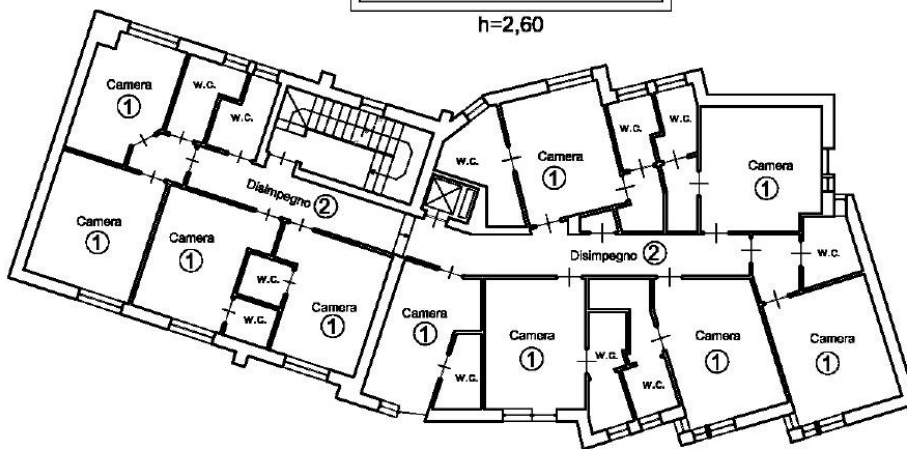
PIANO PRIMO

h=2,60



PIANO SECONDO

h=2,60

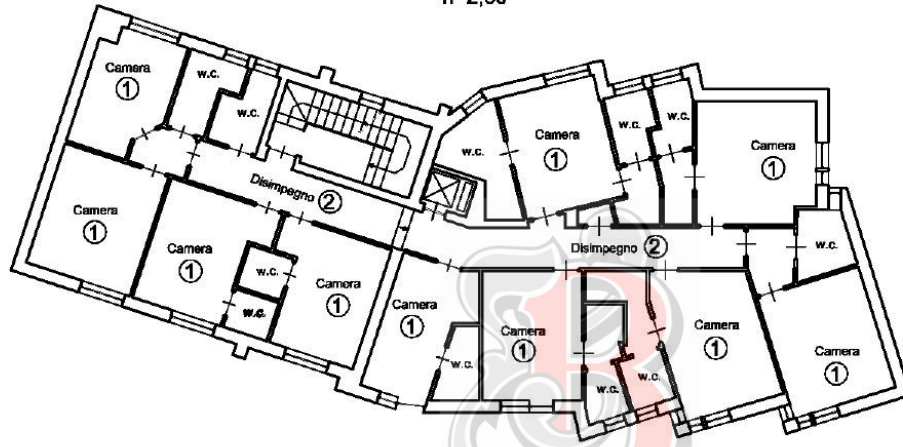


- ① Camere
- ② Sale, vano scale e corridoi
- ③ Cucina, servizi, reception ecc
- ④ Depositi e locali tecnici



PIANO TERZO

h=2,60



- ① Camera
- ② Sale, vano scale e corridoi
- ③ Cucina, servizi, reception ecc
- ④ Depositi e locali tecnici

PIANO QUARTO

hm=2,50

